

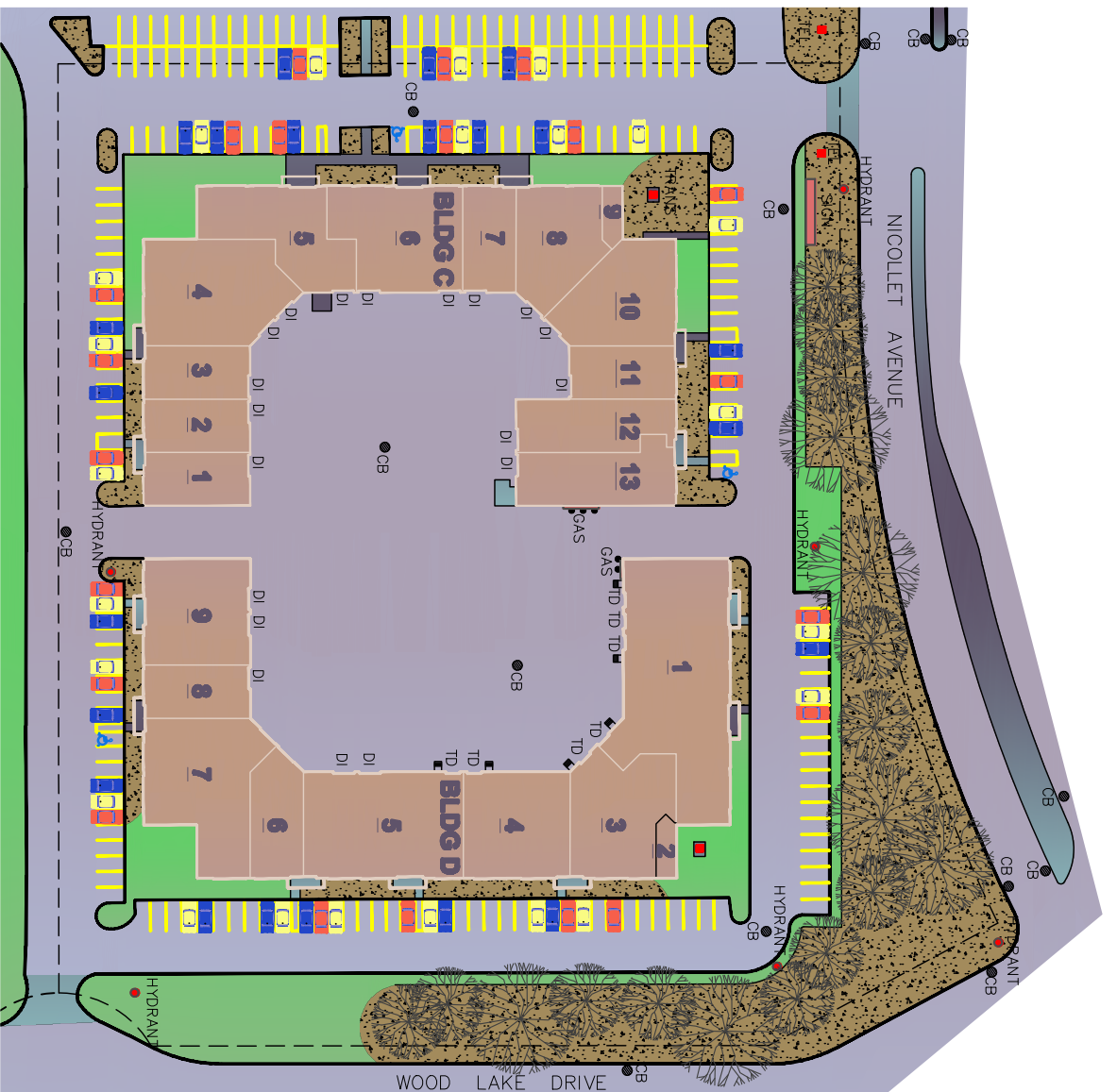
- SYMBOL KEY:
- CB CATCH BASIN
  - DI DRIVE-IN DOOR
  - GAS GAS METER LOCATION
  - HYDRANT FIRE HYDRANT
  - SIGN BUILDING GROUND SIGN
  - TD TRUCK DOCK
  - TEL TELEPHONE GROUND BOX
  - TRANS ELECTRICAL TRANSFORMER

BUILDING 'C' 12227-12253 NICOLLET BUSINESS CAMPUS	
KEY	TENANT
1	Suite 12227
2	Suite 12229
3	Suite 12231
4	Suite 12233-35
5	Suite 12237
6	Suite 12239-41
7	Suite 12243
8	Suite 12245
9	Mech Room
10	Suite 12247
11	Suite 12249
12	Suite 12251
13	Suite 12253

BUILDING 'D' 12201-12225 NICOLLET BUSINESS CAMPUS	
KEY	TENANT
1	Suite 12201-05
2	Mech Room
3	Suite 12207
4	Suite 12209
5	Suite 12211-15
6	Suite 12217
7	Suite 12219
8	Suite 12221
9	Suite 12223-25

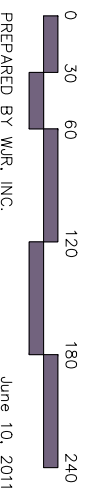
AREA CALCULATIONS *	
PARKING SPACES	183
PARKING LOT	140,427 SF
WALKS	36,183 SF
LANDSCAPE - GRASS	24,198 SF
LANDSCAPE - NON-GRASS	48,325 SF

\*Area Calculations are Approximate



# NICOLLET BUSINESS CENTER - BLDG 'C' & 'D'

12201 - 12253 NICOLLET AVENUE SOUTH, BURNSVILLE, MN 55337



PREPARED BY WJR, INC.

June 10, 2011



# Wellington

MANAGEMENT, INC.

1625 Energy Park Dr., Suite 100

St. Paul, MN 55108

Tel: 651-992-9844 Fax: 651-992-0072