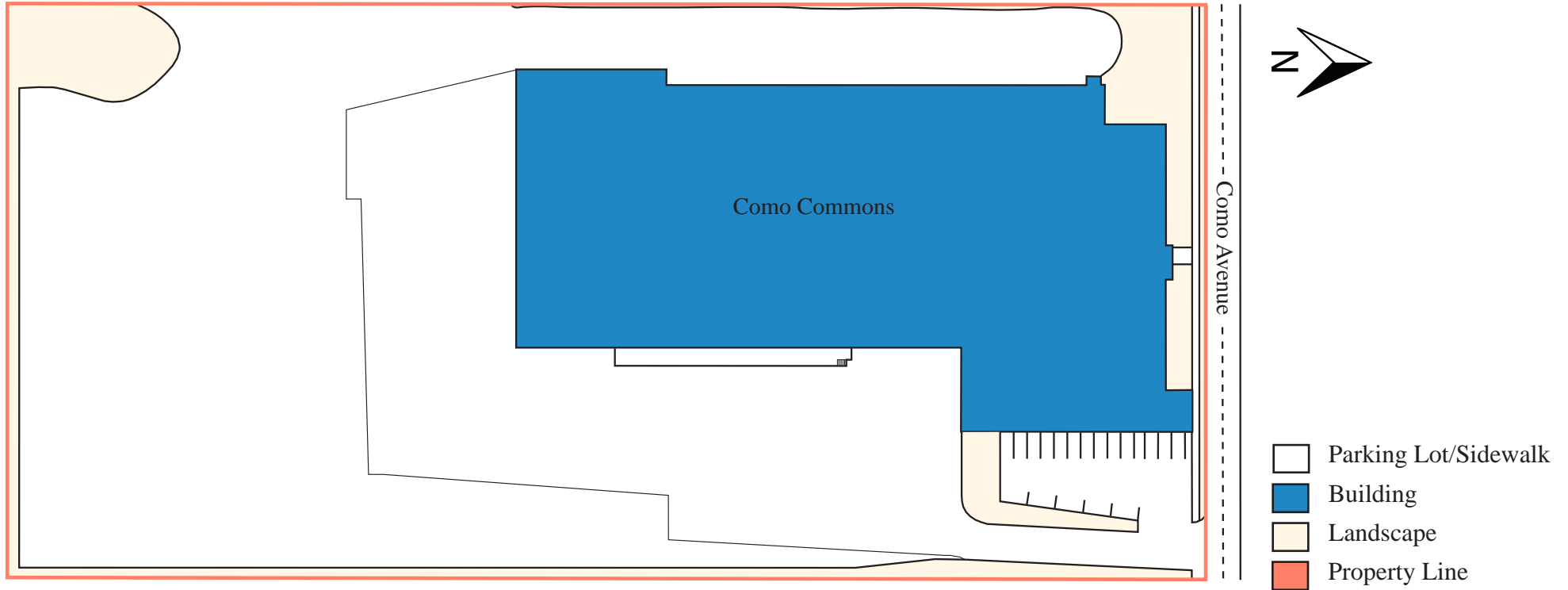


# COMO COMMONS



1800-1810 Como Avenue, St. Paul, MN 55108

# SITE PLAN



## PROPERTY HIGHLIGHTS

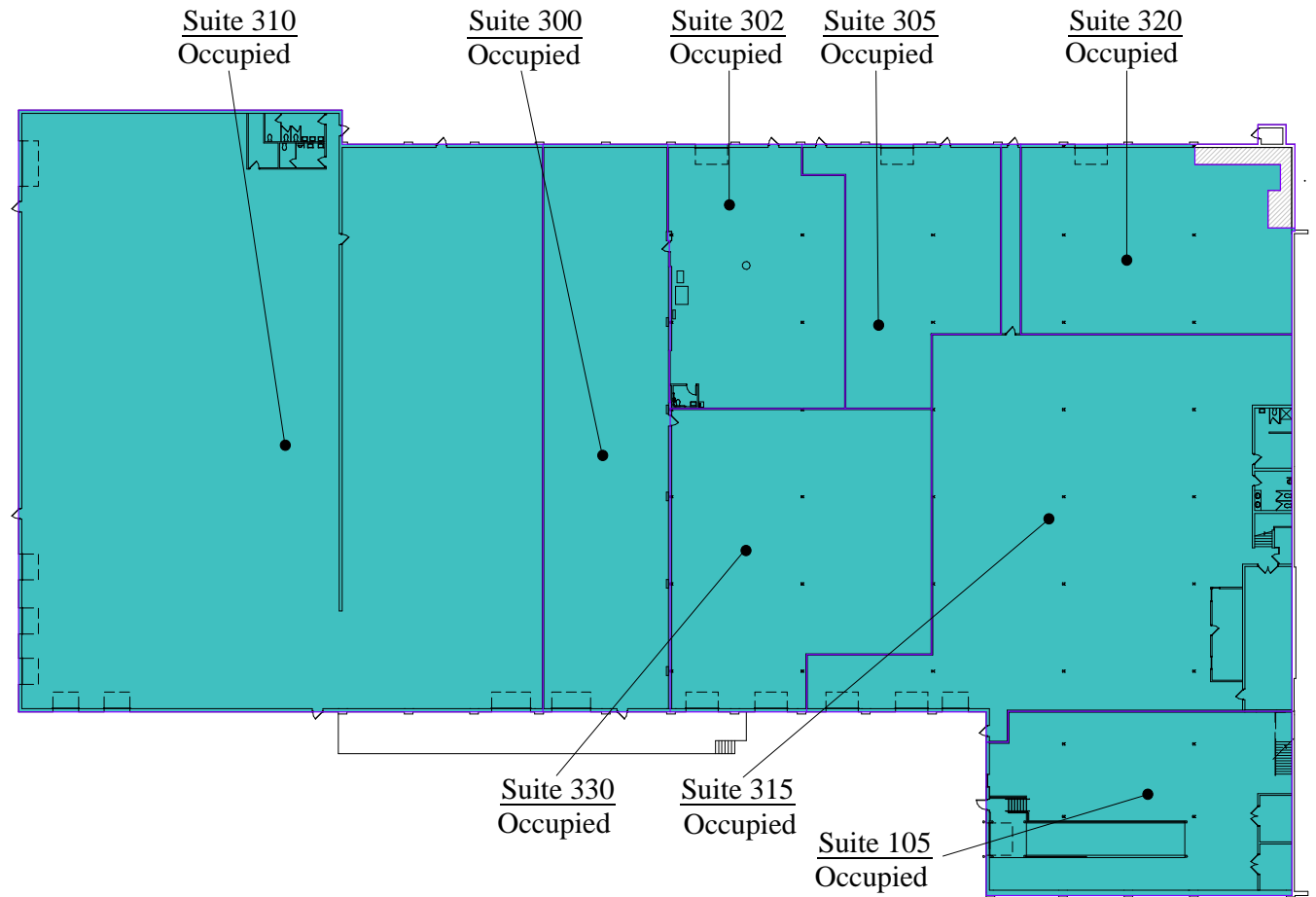
- Central distribution location in Midway
- Located immediately accross the State Fairgrounds
- Site accommodates .75 acre of outside storage
- Plenty of flexibiilty for storage, office or manufacturing needs






ADDRESS	1800-1810 Como Avenue, St. Paul, MN 55108
BUILDING AREA	Office: 10,600 SF   Warehouse: 75,800 SF
NUMBER OF STORIES	Warehouse: 1   Office: 2
PARKING STALLS	450 Stalls
CLEAR HEIGHT	16'-20'
YEAR BUILT	1954 & 1977



# FLOOR PLANS

LOWER LEVEL  
75,800 SF



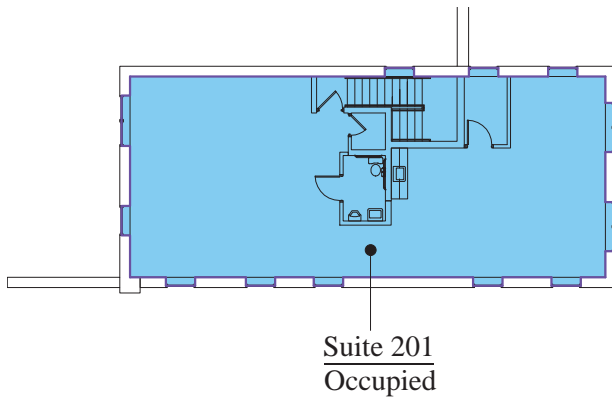
-  Building Common Area
-  Vacant Office Area
-  Occupied Office Area
-  Vertical Penetration
-  Occupied Warehouse Area



# FLOOR PLANS

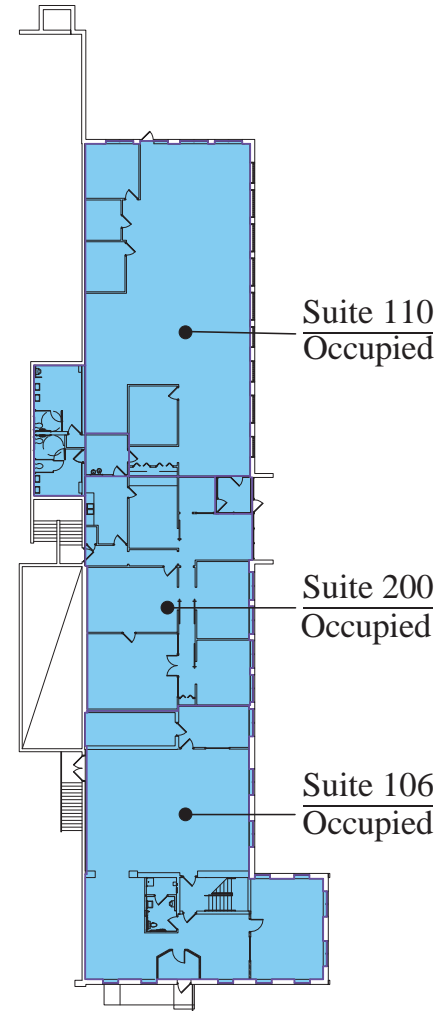
## SECOND FLOOR






1,500 SF



## UPPER LEVEL

9,000 SF



-  Building Common Area
-  Vacant Office Area
-  Occupied Office Area
-  Vertical Penetration
-  Occupied Warehouse Area



# AREA DEMOGRAPHICS

	1 MILE	3 MILES	5 MILES
POPULATION	11,611	139,306	448,307
HOUSEHOLDS	4,547	53,775	185,917
HOUSEHOLD INCOME	\$84,947	\$75,540	\$73,983

COMO AVENUE 9-300 VPD





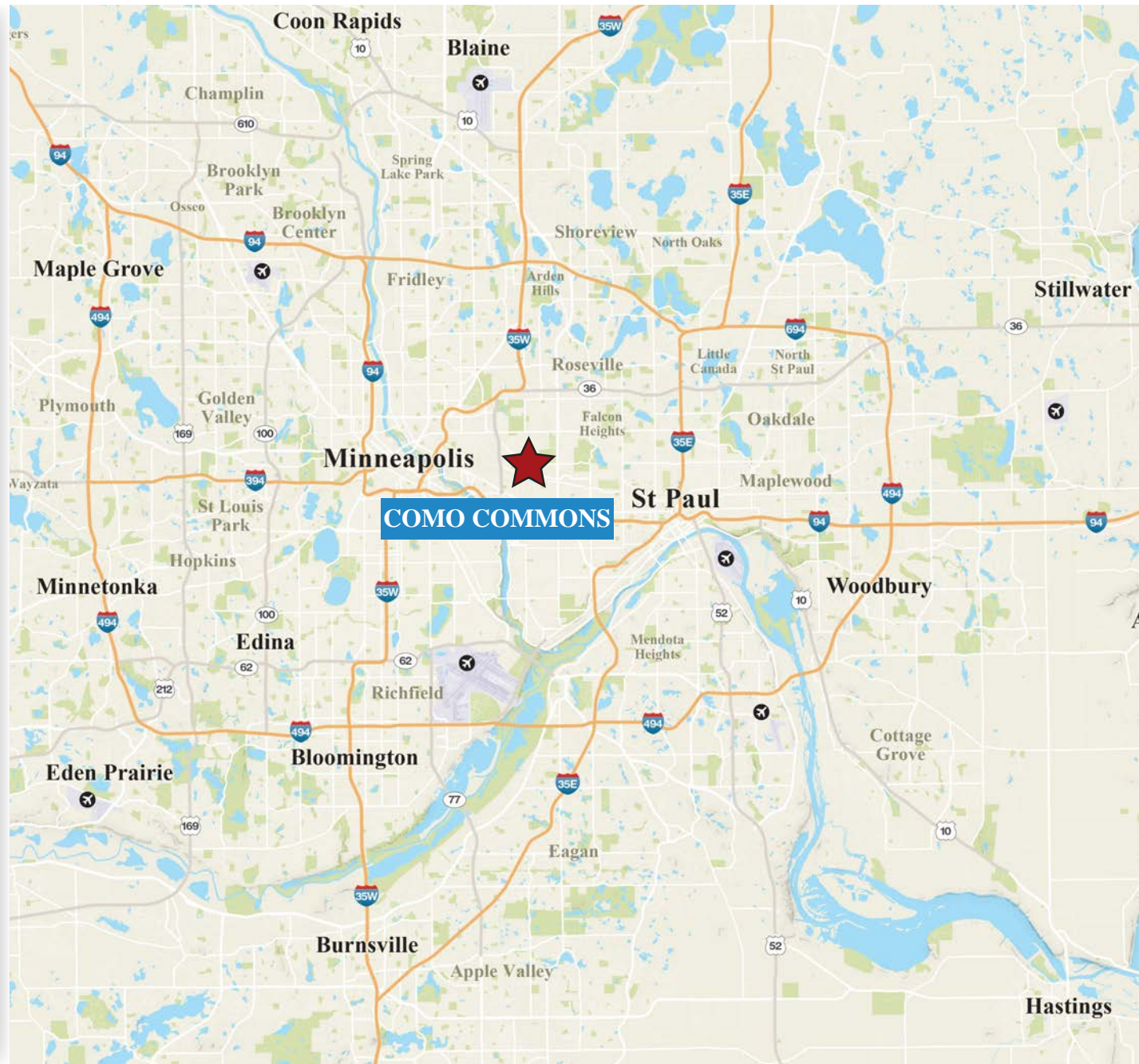
# CONTACTS

## Eric Olsen

Property Manager & Leasing Agent  
(651) 999-5539 Direct  
eolsen@wellingtonmgt.com

## Ashley Burdine

Customer Service & Property Administrator  
(651) 999-5506 Direct  
(651) 999-5516 Customer Service  
aburdine@wellingtonmgt.com



1625 Energy Park Drive, Suite 100, St. Paul, MN 55108 | Main (651) 292-9844 | Fax (651) 292-0072 | [wellingtonmgt.com](http://wellingtonmgt.com)